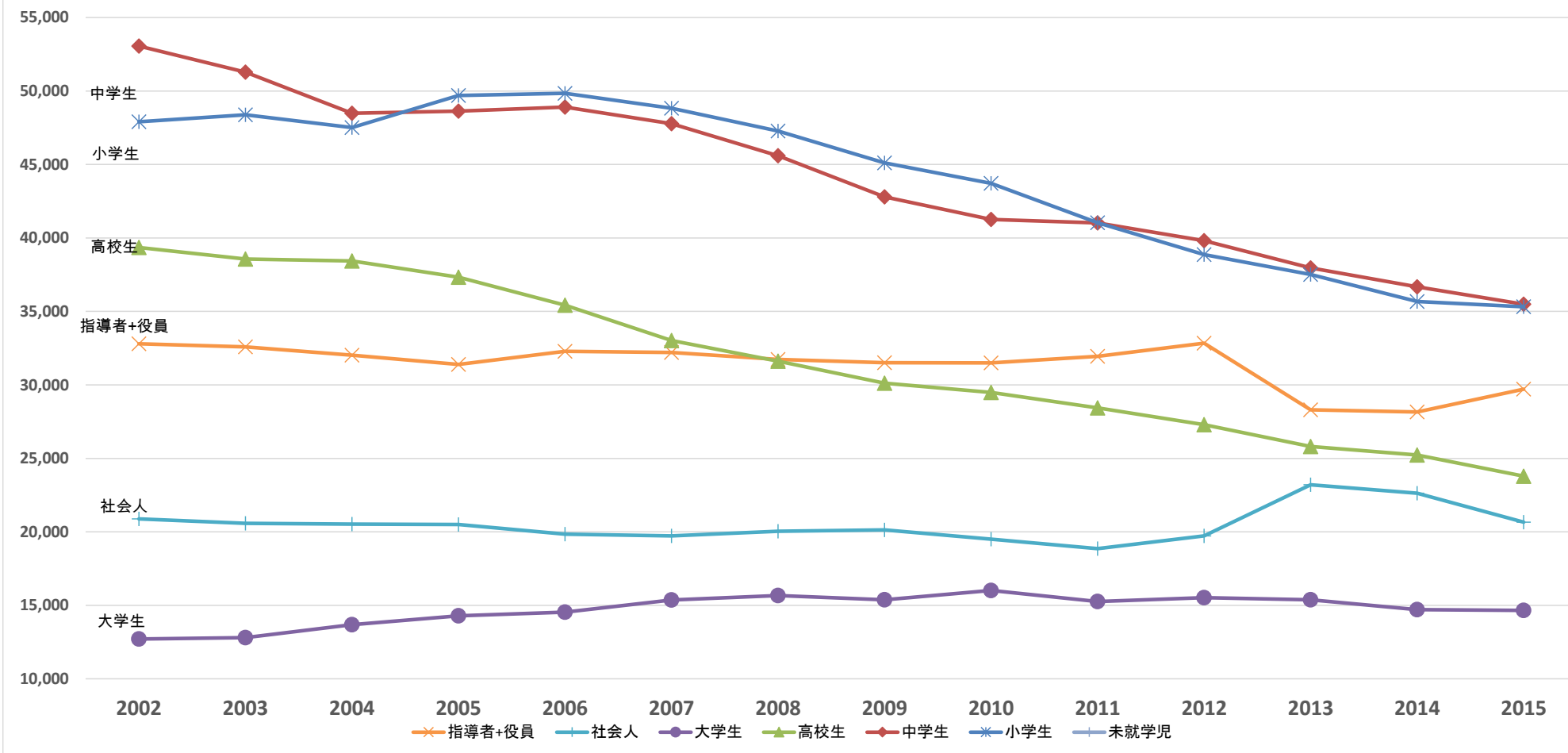


競技人口

全日本柔道連盟登録人口推移 2002年～2015年(未就学児除く)



	2002	2003	2004	2005	2006	2007	2008	2009	2010	2011	2012	2013	2014	2015
指導者+役員	32,798	32,585	32,025	31,396	32,288	32,206	31,731	31,513	31,499	31,949	32,839	28,311	28,157	29,713
社会人	20,884	20,580	20,530	20,503	19,845	19,721	20,040	20,127	19,508	18,859	19,727	23,203	22,623	20,659
大学生	12,709	12,799	13,684	14,286	14,539	15,366	15,660	15,382	16,013	15,262	15,521	15,379	14,703	14,648
高校生	39,350	38,566	38,432	37,326	35,430	33,021	31,609	30,121	29,484	28,437	27,291	25,807	25,234	23,791
中学生	53,059	51,277	48,485	48,630	48,906	47,781	45,593	42,793	41,254	41,028	39,816	37,963	36,673	35,488
小学生	47,905	48,379	47,516	49,693	49,843	48,820	47,270	45,114	43,709	41,040	38,863	37,513	35,676	35,317
未就学児	0	0	1,357	1,204	1,404	1,500	1,428	1,482	1,495	1,375	1,483	1,521	1,435	1,595
合計	206,705	204,186	202,029	203,038	202,255	198,415	193,331	186,532	182,962	177,950	175,540	169,697	164,501	161,211